

2024 WORLD'S TOUGHEST ROW

SHORE THING

Two rowers and two ruggers from Michigan embracing the physical and mental challenges of the World's Toughest Row as opportunities for growth and transformation. In June 2024, the team will set out from the coast of California and will not touch land again until they reach the finish line in Hawaii.



**PUT US IN A BOAT,
DON'T PUT US IN A BOX**

BY COMPLETING THIS OCEAN ROW, WE HOPE TO INSPIRE ALL
WOMEN TO BREAK BARRIERS AND PURSUE THEIR PASSIONS
FEARLESSLY, WHATEVER THEY MAY BE

SUMMARY



THE CHALLENGE



THE GOAL



THE TEAM



THE SUPPORT

THE CHALLENGE

WITH A DISTANCE OF 2800
NAUTICAL MILES, THE
**WORLD'S TOUGHEST ROW IS A
PREMIERE ENDURANCE RACE**

TOTAL DISTANCE OF THE RACE IS
2800 NAUTICAL MILES

OUR TEAM WILL **ROW IN SHIFTS** -
2 HOURS ON, 2 HOURS OFF, 24/7

THE RACE IS **UNSUPPORTED**,
MEANING ALL FOOD, & WATER
MEDICAL SUPPLIES MUST BE
CARRIED ON BOARD FOR THE
DURATION OF THE ROW



PHYSICAL CHALLENGE

SEASICKNESS
SLEEP DEPRIVATION
CALORIE DEFICITS
BLISTERS AND SORES
EXHAUSTION



MENTAL CHALLENGE

PRE-RACE TRAINING
(CERTIFICATIONS,
SURVIVAL COURSES)
WEATHER CHALLENGES
EQUIPMENT MALFUNCTIONS

THE GOAL

OUR GOAL IS TO CROSS THE FINISH LINE AS A UNIFIED TEAM, PROUD OF THE EFFORT WE PUT FORTH AND THE BOND WE HAVE FORGED ON THIS INCREDIBLE JOURNEY.

ULTIMATELY, WE WANT TO PROVE THAT WITH GRIT, DETERMINATION, AND A SUPPORTIVE TEAM, ANYTHING IS POSSIBLE.



THE CREW



**ERIN
ENK
VIRGINIA**



**LAURA
ENK
MASSACHUSETTS**



**CHELSEA
BROEKEMA
VIRGINIA**



**JANAE
WESLEY
NEW YORK**

ERIN ENK

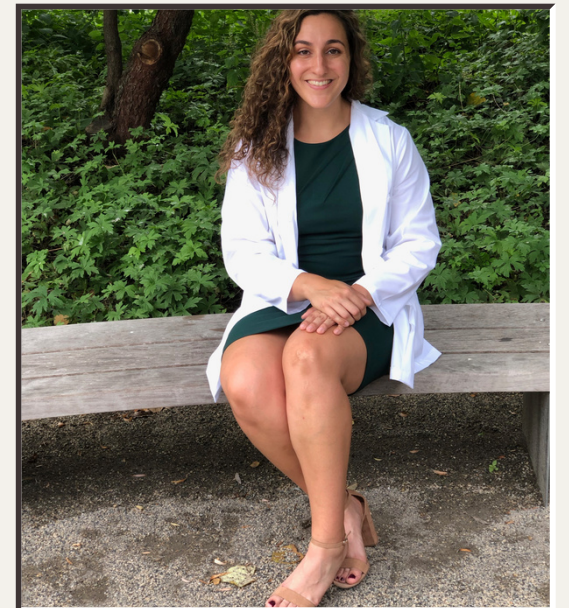
Hometown: Ann Arbor, MI

Occupation: Physical Therapist

Most Excited About: Bioluminescence!

All of her life, Erin has been reminded about her limitless potential. To be a top student, a top athlete, to have an unparalleled career - these thoughts are no strange thing to her. As a retired Division I athlete, world traveler, and newly minted Doctor of Physical Therapy, Erin has lived a life she is proud of. Still, she can't escape the feeling that there's more waiting just beyond her reach.

Now, Erin's made a promise to finally step outside the realm of potential - to test her limits and prove that she is capable of far more than she's ever imagined. With a determined mind and adventurous spirit, Erin is ecstatic to fulfill this promise through the World's Toughest ROW.



LAURA ENK

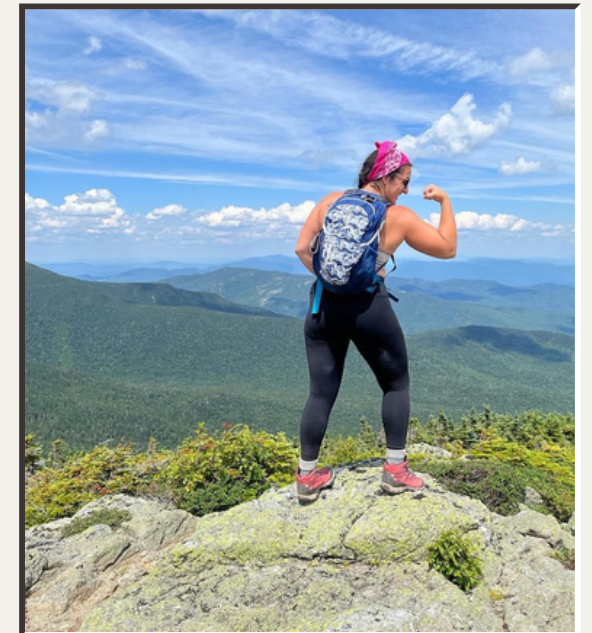
Hometown: Ann Arbor, MI

Occupation: Physical Therapist

Most Excited About: Moana Soundtrack on Repeat

Laura is a Midwestern transplant living her best East Coast life as a physical therapist in Boston, MA. Laura has always been athletic, growing up playing basketball, volleyball, softball, and eventually going on to play D1 Elite rugby at Lindenwood University. However, it wasn't until Laura moved out East to pursue her doctorate that she discovered a passion for adventure - hiking, kayaking, skydiving, and now, ocean rowing!

As a sub-acute rehab PT, Laura works with patients who are battling significant disease and sickness, whose physical limitations make even sitting up in bed a monumental challenge. Laura knows that movement is a precious gift, not always guaranteed. She believes there is no better way to honor your body than to push to discover what it is truly capable of. With no prior rowing experience, Laura is ecstatic to push her mental and physical limits, and to put her grit to the test alongside 3 badass women.



CHELSEA BROEKEMA

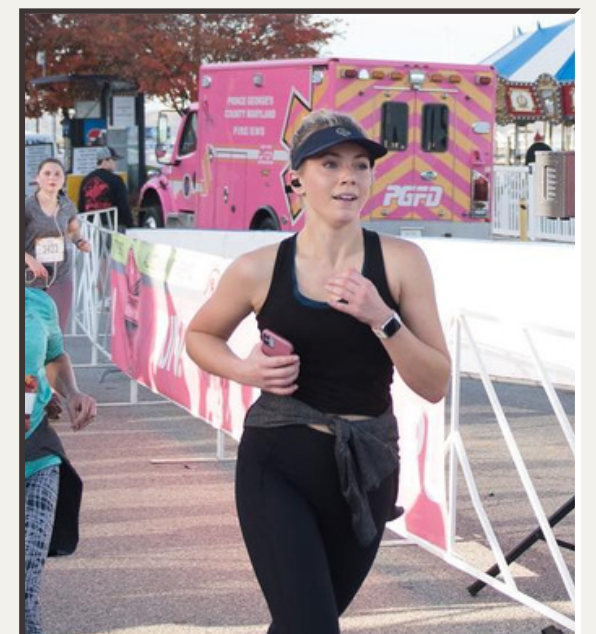
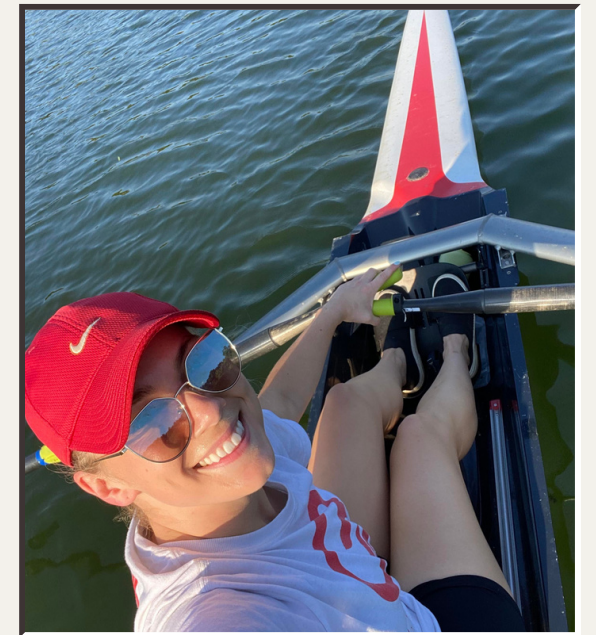
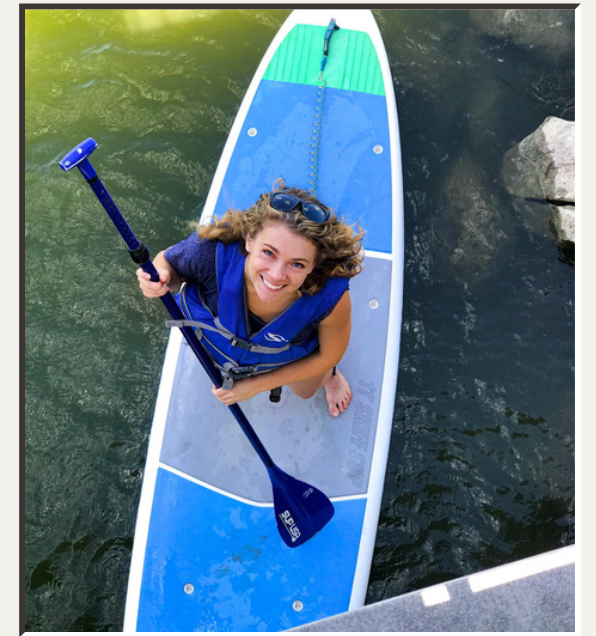
Hometown: Grand Rapids, MI

Occupation: Event Planner

Most Excited About: Ocean Sunsets

For as long as she can remember, Chelsea's has been encouraged to chase adventure. From pursuing a music degree to moving across the country, and now, rowing the Pacific Ocean, she's never been one to back down from a challenge.

Currently an Event Planner in the Washington, D.C. metro area, Chelsea has a passion for creating "magic" moments. She is an avid rower and athlete who enjoys running, hiking, and exploring the city with her rescue dog, Gus. Chelsea currently lives in Washington, D.C. and rows out of the Thompson Boat Center on the Potomac River.



JANAE WESLEY

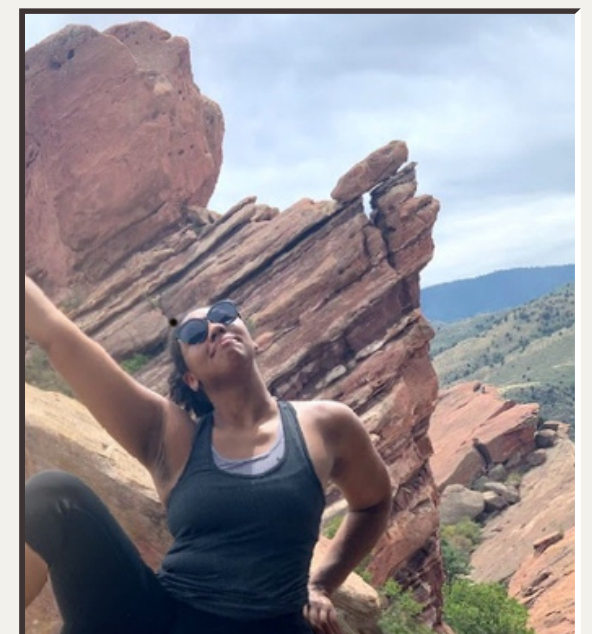
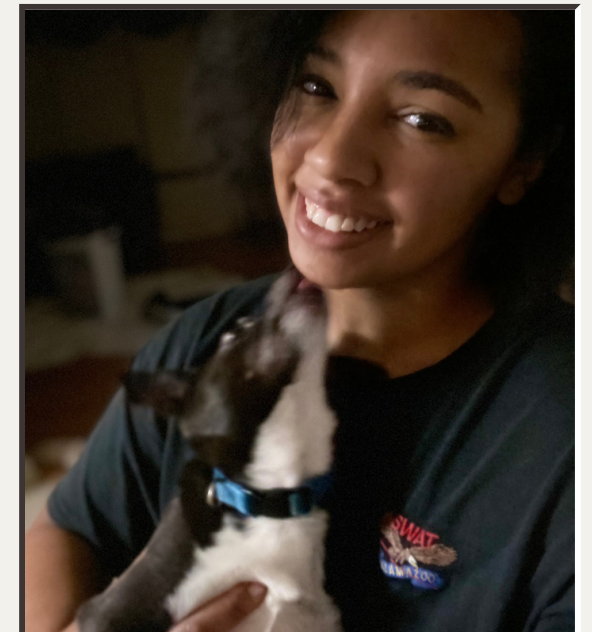
Hometown: Kalamazoo, MI

Occupation: Mover, Shaker, Pastry Maker

Most Excited About: Observing the effects of equal parts exercise and sleep for over 30 days

Originally from Michigan, Janae is now a baker living in Brooklyn, NY. As the only teammate acquainted with all three teammates pre-GPR, she jumped at the opportunity to push herself to new limits while also sharing a unique bonding experience with her friends.

Janae is no stranger to unorthodox sports, having competed in both Martial Arts and Rugby throughout her teens and 20s. With no previous rowing experience, she's truly "jumping into the deep end" learning a new skill. Her goal is to be persistent and positive embarking on this new adventure.



THE COST - \$100,000

THE BOAT

Our home away from home on this Pacific journey. Includes the cost of chartering a pre-loved ocean rowing boat.

\$30,000

EQUIPMENT

Essential safety, communication, and nutrition supplies to keep us racing at full potential.

\$25,000

FEES

World's Toughest Row Entry Fee and Required Race Certifications to ensure we're fully prepared from start to finish.

\$30,000

MISC

Miscellaneous costs including crew travel, accommodations, boat transportation and storage, and promotional materials.

\$15,000

THE SUPPORT

TITLE SPONSOR - (1) AVAILABLE

Custom branding package based on your company's specific needs, including custom wrapping on the boat hull, naming rights, and industry exclusivity. Please contact for details.



PLATINUM SPONSOR - \$50K

- Premium Cabin Wrap Logo (See Diagram)
- Chest Logo on Team Apparel (worn for all training sessions, interviews, and during the row)
- 1 Pre or Post Race Talk/Interview
- Signed Team Photo and Oar presented at the end of the row
- Logo on Shore Thing website and all printed materials
- Sponsor introduction on social media before, during, and after the race
- Inclusion and tagging on all Shore Thing social media posts
- Rights to use and share team photography, video, and media

GOLD SPONSOR - \$30K

- Large Logo on the Boat Hull (See Diagram)
- Sleeve Logo on Team Apparel (worn for all training sessions, interviews, and during the row)
- 1 Pre or Post Race Talk/Interview
- Signed Team Photo and Oar presented at the end of the row
- Logo on Shore Thing website and all printed materials
- Sponsor introduction on social media before and after the race
- Inclusion and tagging on all Shore Thing social media posts
- Rights to use and share team photography, video, and media

THE SUPPORT

SILVER SPONSOR - \$ 15K

- Medium Logo on Boat Hull (See Diagram)
- Logo on Shore Thing website and all printed materials
- Sponsor introduction on social media before and after the race
- Inclusion and tagging on all Shore Thing social media posts
- Rights to use and share team photography, video, and media

BRONZE SPONSOR - \$5K

- Small Logo on Boat Hull (See Diagram)
- Logo on Shore Thing website and all printed materials
- Sponsor intro on social media before the race
- Inclusion & tagging on all Shore Thing social media posts
- Rights to use and share team photography, video, and media

OAR PARTNER - \$2k (3) Available

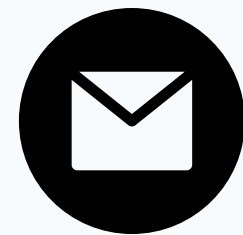
- Your name or logo on a set of oars
- Keep the oars after the row (assuming the ocean doesn't take them first)

PRODUCT SPONSORS

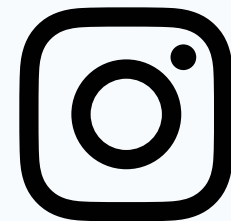
We'll need all sorts of equipment to get us across the Pacific, from sunglasses to sportswear. Please contact us if you are interested in donating or sponsoring a specific product.



STAY IN TOUCH



shorethinggpr@gmail.com



[@shorething.gpr](https://www.instagram.com/shorething.gpr)



[@shorething.gpr](https://www.facebook.com/shorething.gpr)